



WORLDWIDE ELECTRIC MOTOR DATA SHEET

NT1-36-56CB



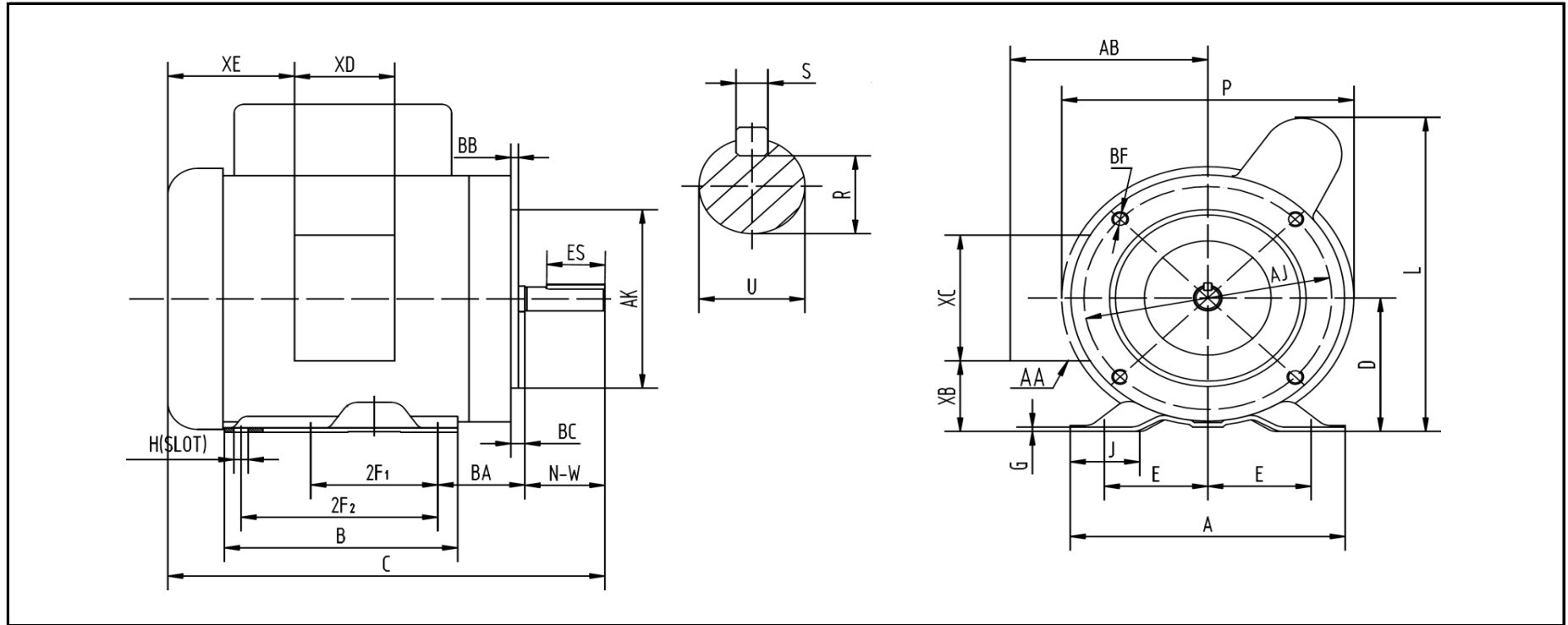
FREQUENCY	60 HZ		
HORSEPOWER	1		
RPM / POLES	3600 / 2		
VOLTAGE / PHASE	115/208-230 V / 1		
FULL LOAD AMPS; 115 / 230	11.5 / 6.3-5.8 A		
FULL LOAD SPEED	3450 RPM		
SERVICE FACTOR	1.15		
FRAME	56C		
ENCLOSURE / DEGREE OF PROTECTION	TEFC / IP43		
INSULATION CLASS	F		
EFFICIENCY / POWER FACTOR	<u>LOAD</u>	<u>EFF.</u>	<u>P.F.</u>
	100%	69.5%	0.80
DUTY CYCLE	Continuous		
MAX. AMBIENT TEMPERATURE	40° C		
MAX. ELEVATION	3300 Ft. Above Sea Level		
TEMPERATURE RISE (At Full Load)	80° C		
DE BEARING	6203		
ODE BEARING	6203		
REGREASING INT. - DE BEARING	---		
REGREASING INT. - ODE BEARING	---		
GREASE TYPE	Mobil Polyrex EM		
MOUNTING	F1		
ROTATION	Bi-Directional		
CONNECTION DIAGRAM	115/230 V - 6 Lead		
APPROXIMATE WEIGHT	30 lbs.		
INVERTER RATING	---		
START CAPACITOR	500UF/165V		
RUN CAPACITOR	---		





WORLDWIDE ELECTRIC MOTOR DRAWING

NT1-36-56CB



DIMENSIONS - INCHES

MOUNTING					A	B	C	D	G	J	L	P	AB	BC
E	2F1	2F2	H	BA										
2.44	3	5	0.34	2.75	6.54	6.54	12.4	3.5	0.12	1.65	8.2	7.3	5.2	-0.19

KEY		KEYSET	FLANGE				SHAFT		TERMINAL BOX				
S	ES	R	AK	AJ	BF	BB	N-W	U	AA	XB	XC	XD	XE
0.188	1.41	0.517	4.5	5.875	3/8-16	0.16	1.88	0.625	3-0.88 / 2-1.109	1.65	3.7	3.2	2.15